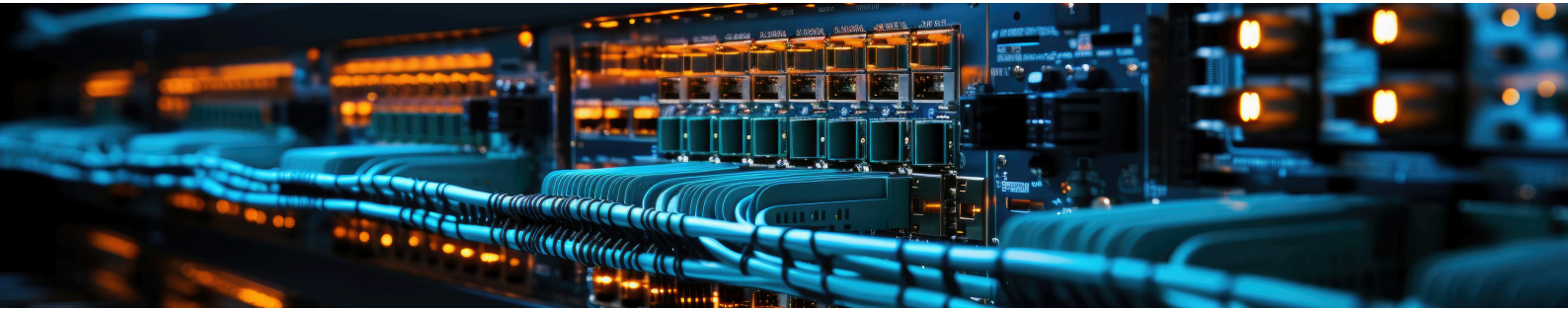


# LIMITED ENERGY APPRENTICESHIP PROGRAM



## WHAT IS THE AREA I LIMITED ENERGY APPRENTICESHIP PROGRAM?

The Area I Limited Energy apprenticeship program is a 2 or 3-year program designed to give students the experience and training necessary to earn the status of Limited Energy Technician.

## BENEFITS OF APPRENTICESHIP

- Paid employment during training
- Credit toward an associate's degree
- Development of marketable skills
- Pathway to a secure career
- Background to become a lead person

## WHAT DO LIMITED ENERGY TECHS DO?

Limited Energy Technicians install, troubleshoot, maintain, replace, and repair electrical systems under 100 volts.

## WHERE DO LE TECHS WORK?

There is a wide variety of job locations for Limited Energy Technicians. Some examples are:

- construction sites
- schools and hospitals
- hotels, restaurants, grocery stores
- commercial office buildings
- residential homes

## WORKING CONDITIONS?

Limited Energy Technicians perform work both indoors and outdoors in diverse weather conditions. This work involves standing, bending, reaching, and lifting in confined spaces and at heights ranging up to 160+ feet.

## TWO TYPES OF LICENSES

There are two types of Limited Energy licenses: **Class A** and **Class B**. Both types of licenses allow technicians to install communication systems, specialized control systems, and audio-visual systems. Class A technicians can also install fire, security, and life safety alarm systems.

	Class B Program			
Class B				
Class A	TELECOMMUNICATIONS	AUTOMATED CONTROLS	AUDIO-VISUAL	CCTV (MONITOR ONLY)
	2 years 4000 on-the-job hours 288 classroom hours			
Class A only				
	ACCESS CONTROLS	FIRE ALARM	CCTV (SECURITY)	BURGLAR ALARM
	3 years 6000 on-the-job hours 432 classroom hours			

**Earn While You Learn**

**No Experience Required**



## IEC of Oregon Presents

# LIMITED ENERGY APPRENTICESHIP PROGRAM

### WHAT DOES A LE TECH EARN?

Apprentices begin at half of the average salary of journey workers and receive pay increases as they progress through the program.

Entry-level apprentices in the Limited Energy program earn \$18.53 - \$20.15 per hour to start. Apprentices generally receive their first raise after 3 months.

Licensed Limited Energy Technicians earn on average \$77,064 - \$83,824 per year.

### WHAT ARE THE PROGRAM COSTS?

Related training tuition and books combined cost around **\$1900 per year**. This cost is the responsibility of the apprentice, although some employers do assist with expenses. There are also scholarships and financial aid opportunities available to apprentices annually.

### WHERE IS SCHOOL?

Classroom instruction and labs are conducted at **Clackamas Community College in Wilsonville, Oregon.**

- Classes are one evening per week
- 6 PM to 10 PM
- fall, winter, and spring

When you are registered in the program as an apprentice you may start school.

Limited Energy apprentices can earn between **46 - 58 college credits** that can be applied towards a **Clackamas Community College Completion Certificate or Associates of Applied Science degree.**

**Veterans may use educational benefits while registered in the program.**

### ON THE JOB

Apprentices work under the direct supervision of licensed Limited Energy Technicians. They work for an employer who is approved by the Limited Energy committee to be a **training agent** through the Bureau of Labor & Industries. Training agents have agreed to provide on-the-job training and supervision according to approved industry standards.

### HIRING CRITERIA AN EMPLOYER MIGHT WANT

- Valid driver's license and driving record that meets liability insurance requirements.
- Pass a background check.
- Pre-employment drug screening test.
- Access to reliable transportation.
- No fear of heights or confined spaces.

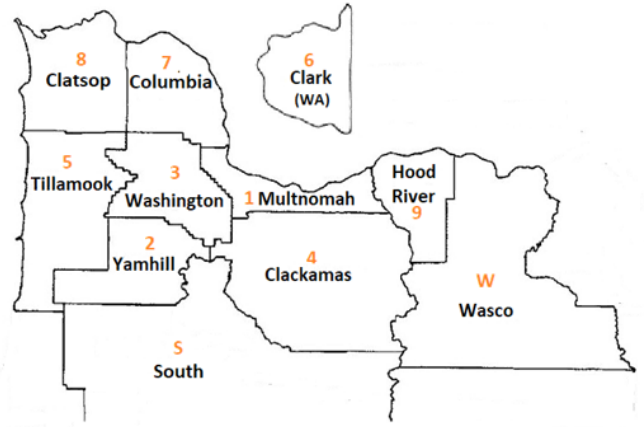
# LIMITED ENERGY APPRENTICESHIP PROGRAM

## WHEN CAN I GET HIRED?

The program does not place apprentices with employers. Instead, if you are placed in the top applicant group, employers may contact you for an interview. Applicants not placed in the top group may be hired by training agents participating in the EEO Partner program.

Area I employers are located in these counties. However, you may be required to travel all over Oregon.

## WHERE ARE EMPLOYERS LOCATED?



## HOW TO APPLY

**YOU MUST COMPLETE ALL FIVE STEPS. ALL APPLICANTS MUST BE AT LEAST 17 YEARS OLD TO APPLY AND 18 YEARS OLD TO BEGIN THE PROGRAM.**

### 1

## GATHER REQUIRED DOCUMENTATION

- **Diploma or GED:** Proof of a high school diploma, GED, or Associate Degree or higher from an accredited educational institution.
- **Algebra or Placement Test:** (one of the following)
  - Completion of one year of high school algebra, Integrated Math II, or equivalent with a grade of “C” or higher
  - GED (2014 or newer) math score of 150 or higher
  - Math placement test scores placing you into the second term of college algebra or higher
  - NCRC WorkKeys Applied Math score of 5 or higher
- **National Career Readiness Certificate WorkKeys Assessment Scores:**
  - Applied Math, Workplace Documents, and Graphic Literacy
  - Copies of the Individual Score Reports for all three assessments must be submitted. We do not need the certificate itself, but the numerical scores you receive on each test. You may schedule an appointment to take the tests at any WorkSource Oregon center, Clackamas Community College – Wilsonville Campus, or Chemeketa Community College – Salem Campus.
- **Additional Documentation:** Optional documentation for additional points. Driver’s license, CPR Certification, DD-214, or Register Pre-Apprenticeship Completion.

# LIMITED ENERGY APPRENTICESHIP PROGRAM

## 2 COMPLETE APPLICATION, UPLOAD DOCUMENTATION AND SUBMIT

- The link for our online application can be found on our website at <https://iecoregon.org/apprenticeship/limited-energy-application/>
- The required documentation must be uploaded to your application for submittal.

## 3 COMPLETE AN ONLINE RECORDED INTERVIEW

- An interview link will be emailed to applicants upon verification of Steps 1 and 2. Applicants will have 3 days to complete the interview after receipt of the link.

## 4 ATTEND A MANDATORY ORIENTATION MEETING

- There will be a monthly mandatory orientation via Zoom. Applicants who have completed Step 3 will be emailed a zoom link on Friday prior to the meeting. Meeting dates will be published on the website with the application link.

Individuals of all ethnicities, genders, and backgrounds are encouraged to apply.

## 5 SCORING AND PLACEMENT

- Applications will be scored after Step 4 is completed. Scores are based on submitted documentation, WorkKey test scores, and interview scores.
- Applicants are placed into one of three groups depending on their score. Opportunities will be provided to increase your score if you place in group two or three. Placement notification will be sent via email.

### QUESTIONS?

[KRISTAN@IECOREGON.ORG](mailto:KRISTAN@IECOREGON.ORG)

[EVA@IECOREGON.ORG](mailto:EVA@IECOREGON.ORG)

The Area I Limited Energy JATC shall not discriminate against apprenticeship applicants or apprentices based on race, color, religion, national origin, sex (including pregnancy and gender identity), sexual orientation, genetic information, or because they are an individual with a disability or a person 18 years old or older. The Area I Limited Energy JATC shall take affirmative action to provide equal opportunity in apprenticeship and shall operate the apprenticeship program as required under this Plan and Title 29 DFR, part 30.

